

Supporting Municipalities, Contractors and the Plumbing Industry



TRENCHLESS SOLUTIONS

Advancing Pipe & Infrastructure Rehabilitation

PRODUCT CATALOG



INDEX OF SOLUTIONS

Trenchless Pipe Rehabilitation

PipePatch Solutions

PipePatch No Dig Pipe Repair	4-5
PipePatch Repair Kits	6-7
PipePatch Repair Packers	8-9
PipePatch UV Light System	10-11
TYGERPatch Mainline Connect Repair	12-13
PipePatch Equipment	14
Pipe-Robo-Tec USA Mechanical Seal	15
Lateral Lining Consumables & Equipment	16-19
Lateral Lining Trial Program	20
SilverBack XL Flexible Couplings	21

Drain Cleaning & Reinstatement Solutions

Lining Cannon	22
Miller Systems	22
Shafts, Sockets & Adapters	22
Sleeves & Bearings	23
Steering Axle & Fine Tuning Tools	23
Smart Cutter Packages	23
Smart Cutter Hubs & Hub Discs	23
Drain Cleaning Chains	24
Drain Cleaning Grabbers	25
Smart Spider	25
Twister Mini & Twister Express	25
Twister Liner Removers & Rep. Parts	25
Side Grinding Panels (10-Panels)	25
Polishing & Pipe Cutting Panels	26
Panels For Mini Cleaner	26
Front Panels & Drill Heads	26
Special Drill Head Cutters	26
Picote Coating System	26
Resins & Brushes	26

Inspection Systems

Pipe Trekker Crawler & Add-Ons	27
Conquest Push Camera Systems	28
S1E Push Camera System & Combo	29
Camera Head Locator & Leak Detector	29

Water Management

Epoxy/Grout Guns

- Quad ONEGUN & ONEGUN Mini	30
- Quad M ONEGUN 600/900/1200	30
- I&I Guard Dual Component Pneumatic	30

Pow-R Wrap-Fiberglass Wrap	30
Pow-R Patch Epoxy Patch	30
Pow-R Wrap Industrial Wrap	30

Quadex Manhole Rehabilitation

Manhole Repair Material Poster	31
--------------------------------	----

Epoxies & Polymeric

- Structure Guard FM	32
- Structure Guard RS	32
- FlexGuard FM	32
- Chimney Guard	32

Cementitious Materials

- Hyperform	33
- Hyperform-RS	33
- Quad-Plug	33
- QM-1s Restore	33

Polyurethane Grouts

- I&I Guard PRF	33
- I&I Guard SCF	33
- I&I Guard SCF 200	33
- I&I Guard MSF	33

Resource

CIPP White Paper	34
------------------	----

S1E MISSION



In 2009, Source One Environmental (S1E) began with an idea, a product and a desire to provide innovative support to Municipalities, Contractors and Plumbers in the Water Management and Infrastructure Rehabilitation markets.

Today, S1E is the worldwide-leading manufacturer and distributor of trenchless solutions for Infrastructure Rehabilitation and Water Management repairs. With an extensive product line-up ranging from CIPP spot repair products to asset management technology, our solutions provide the industry with permanent and structural repairs in a timely and cost-effective manner. Our dedication within the industry only strengthens as we continue cultivating relationships with customers and strategic partners to engineer constantly evolving solutions.



Pipe repair made from the inside of the damaged pipe – **no excavation needed.**

Trenchless Pipe Rehabilitation

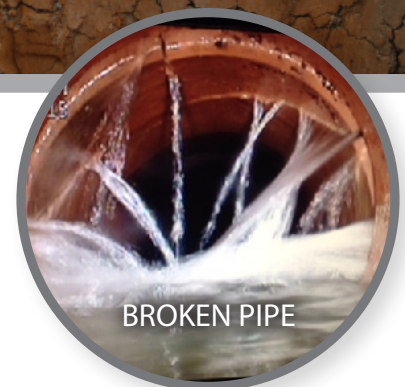


Premier Point Repair Technology

Say goodbye to costly and time consuming excavations, and get right to the point of trenchless pipe repair with the PipePatch® NO DIG Pipe Repair System.

PipePatch's proactive approach provides an effective structural point repair. When compared to 'dig & replace' methods, PipePatch only repairs areas that require rehabilitation—saving time, investment, materials and labor. PipePatch allows you to create multiple repairs in one day and requires as little as one factory trained installer.

**Need a special order Packer or PipePatch kit?
Custom sizes are available for your next job.**



BROKEN PIPE



PIPE REPAIRED

Our Packer Systems repair pipe from 1½" up to 72" diameter with patches in 24", 48", 84", and 10'-15' lengths.



Structural Integrity

PipePatch forms a pipe within a pipe with the resin and fiberglass serving as barrier between the pipe interior and the exterior conditions. Restoring structural integrity, PipePatch exceeds the CIPP Specs ASTM F 1216/ASTM F 3541 that requires materials to be tested for a 50-year minimum service life. PipePatch has been tested and proven to withstand pressure, extreme conditions, and time for the pipe to perform for years to come.

Flow Capacity

After the installation is complete, PipePatch is 1/8" thick which only minimally alters the pipes original diameter. PipePatch's smooth interior and tapered ends improve the pipeline's flow capacity and performance, while providing corrosion and abrasion resistance. Because of it's thin and smooth qualities, the integrity of the pipe is not compromised and functions normally.

Don't Let a 90° Turn Get in Your Way

Before this new technology, the process for repairing elbows was the expensive, dig and replace method. The Elbow Packer system repairs up to a 90 degree sewer fitting while being cost effective and timely, completed in as little as one hour. As with all PipePatch products, you are left with a long-lasting structural repair that



stands up to the most aggressive sewer maintenance.



The PipePatch Lateral Seal system creates a 360° or top hat CIPP lateral connection installed from the main during live flow using the nearest manhole without needing access to



the homeowners property. Designed with non-shrinking components,

TYGERPatch is proven effective and longlasting in the most aggressive sewer conditions.



For use on 3" - 10" diameter pipes, the PipePatch Xtend comes with today's most-complete "pull-in-place" structural repair kit.

- Cure times as low as 1.5 hours
- Complete Kit
- 10' - 15' extra-long packers





PipePatch® Repair Kits

Technical Data

- Odorless and ideal for working in confined spaces
- Outstanding bonding properties to most materials
- Resistance to 63+ chemicals and oils
- Non-flammable - ideal for hotels, airports & hospitals
- Non-hazardous - no transport or disposal issues
- Resin cures in the presence of water
- Structural properties exceed the minimum requirements of ASTM F 1216/ASTM F 3541

Environmentally Safe

- PipePatch contains no VOCs or Styrene
- Safe for storm and sanitary sewers
- Maximum temperature may reach 105° F

Application Advantages

- Custom Lengths Available
- Flow-thru Packers prevent backups during repairs
- Less disruptive and time consuming excavations
- Only standard sewer cleaning and inspection equipment required
- Small repair crews - as few as 1 to 3 people
- Short repair times - several can be done in one day
- Durable 50 year repair life

1½" & 2" REPAIR KITS

Part Number	Description
FPP-1.5X18W	1 1/2" x 18" PipePatch Kit
FPP-2X18W	2" x 18" PipePatch Kit
FPP-2X12W-END	2" x 12" End PipePatch Kit

24" LENGTH - REPAIR KITS

Part Number	Description
FPP-3	3" x 24" PipePatch Kit
FPP-4	4" x 24" PipePatch Kit
FPP-6	6" x 24" PipePatch Kit
FPP-8	8" x 24" PipePatch Kit
FPP-10	10" x 24" PipePatch Kit
FPP-12	12" x 24" PipePatch Kit
FPP-15	15" x 24" PipePatch Kit
FPP-18	18" x 24" PipePatch Kit
FPP-24	24" x 24" PipePatch Kit

48" LENGTH - REPAIR KITS

Part Number	Description
FPP-3X48	3" x 48" PipePatch Kit
FPP-4X48	4" x 48" PipePatch Kit
FPP-6X48	6" x 48" PipePatch Kit
FPP-8X48	8" x 48" PipePatch Kit
FPP-10X48	10" x 48" PipePatch Kit
FPP-12X48	12" x 48" PipePatch Kit
FPP-15X48	15" x 48" PipePatch Kit
FPP-18X48	18" x 48" PipePatch Kit
FPP-24X48	24" x 48" PipePatch Kit

84" LENGTH - REPAIR KITS

Part Number	Description
FPP-6X84-7	6" x 84" (7) PipePatch Kit
FPP-8X84-7	8" x 84" (7) PipePatch Kit
FPP-10X84-7	10" x 84" (7) PipePatch Kit

* Custom lengths available.

ELBOW REPAIR KITS

Part Number	Description
FPP-EL2	2" Elbow PipePatch Kit
FPP-EL3	3" Elbow PipePatch Kit
FPP-EL4	4" Elbow PipePatch Kit
FPP-EL6	6" Elbow PipePatch Kit
FPP-EL8	8" Elbow PipePatch Kit
FPP-EL10	10" Elbow PipePatch Kit

LONG ELBOW REPAIR KITS

Part Number	Description
FPP-EL3X48	3" Elbow - 48" Repair
FPP-EL4X48	4" Elbow - 48" Repair
FPP-EL6X48	6" Elbow - 48" Repair

LATERAL PIPEPLUG KITS

Part Number	Description
FPP-PIPEPLUG-4	4" PipePlug Kit
FPP-PIPEPLUG-6	6" PipePlug Kit
FPP-PIPEPLUG-8	8" PipePlug Kit

PILLOW REPAIR KITS

Part Number	Description
FPP-3036x48	30"-36"x 48" No fold Pillow Kit
FPP-4248X48	42"-48" x 48" No fold Pillow Kit
FPP-60X48	60" x 48" No fold Pillow Kit
FPP-72X48	72" x 48" No fold Pillow Kit

PipePatch® Certifications & Standards Compliance



Plastics Piping System Components and Related Materials



IAPMO Research and Testing assessment of the Quality Assurance System



PipePatch complies with standards ASTM F 1216/ASTM F 3541 "Standard Practice for Rehabilitation of Existing Pipelines and Conduits by Inversion and Curing of a Resin-Imregnated Tube"

PIPEPATCH Xtend REPAIR KITS

Part Number	Description
FPP-EXT-3X120	3" x 120" Pull-in-place Kit
FPP-EXT-4X120	4" x 120" Pull-in-place Kit
FPP-EXT-3X180	3" x 180" Pull-in-place Kit
FPP-EXT-4X180	4" x 180" Pull-in-place Kit
FPP-EXT-6X120	6" x 120" Pull-in-place Kit
FPP-EXT-6X180	6" x 180" Pull-in-place Kit
FPP-EXT-8x120	8" x 120" Pull-in-place Kit
FPP-EXT-8x180	8" x 180" Pull-in-place Kit

PIPEPATCH ONE REPAIR KITS

Part Number	Description
FPP1-STKIT3	3" Dia. / Starter Kit
FPP1-STKIT4	4" Dia. / Starter Kit
FPP1-STKIT6	6" Dia. / Starter Kit
FPP1-KIT3-RK	3" Dia. / Replenishment Kit
FPP1-KIT4-RK	4" Dia. / Replenishment Kit
FPP1-KIT6-RK	6" Dia. / Replenishment Kit



Sold **ONLY** as a Kit, the PipePatch ONE (PP1) is extremely cost effective with no major investment in equipment - "just grab a Kit and go". PP1 has cure times as low as 1-hour.

PipePatch® Packers

Trenchless Pipe Rehabilitation

1½" & 2" PACKERS

Part Number	Description
FPP-PACK1.5-18	1 1/2 x 18" PipePatch Packer
FPP-PACK2	2x18" PipePatch Packer
FPP-PACK2END	2x12" PipePatch Packer - End

24" PATCH PACKERS

Part Number	Description
FPP-PACK3-4	3"-4" x 24" PipePatch Packer
FPP-PACK4-6	4"-6" x 24" PipePatch Packer
FPP-PACK6-10FT	6"-10" x 24" PipePatch Packer - Flow Thru
FPP-PACK8-12	8"-12" x 24" PipePatch Packer
FPP-PACK8-12FT	8"-12" x 24" PipePatch Packer - Flow Thru
FPP-PACK1215FT	12"-15" x 24" PipePatch Packer - Flow Thru
FPP-PACK1824FT	18"-24" x 24" PipePatch Packer - Flow Thru

48" PATCH PACKERS

Part Number	Description
FPP-PACK3-4X48	3"-4" x 48" PipePatch Packer
FPP-PACK4-6X48	4"-6" x 48" PipePatch Packer
FPP-PACK610FT48	6"-10" x 48" PipePatch Packer - Flow Thru
FPP-PACK8-12X48	8"-12" x 48" PipePatch Packer
FPP-PACK8-12X48FT	8"-12" x 48" PipePatch Packer - Flow Thru
FPP-PACK1215FT48	12"-15" x 48" PipePatch Packer - Flow Thru
FPP-PACK1824FT48	18"-24" x 48" PipePatch Packer - Flow Thru

84" PATCH PACKERS

Part Number	Description
FPP-PACK610X84-7	6"-10" x 84" (7) PipePatch Packer - Flow Thru
FPP-PACK8-12X84FT-7	8"-12" x 84" (7) PipePatch Packer - Flow Thru

10' - 15' Xtend PACKERS

Part Number	Description
FPP-PACK 3-4x120	3"-4" / Contact Length 10'
FPP-PACK 3-4x180	3"-4" / Contact Length 15'
FPP-PACK 4-6x120	4"-6" / Contact Length 10'
FPP-PACK 4-6x180	4"-6" / Contact Length 15'
FPP-PACK8-12X120-NW-FT	8"-12" / Contact Length 10'
FPP-PACK8-12X180-NW-FT	8"-12" / Contact Length 15'



* Custom Packer lengths available.

S1E Lateral Packers

S1E Flow Through Packer

LATERAL PIPEPLUG PACKERS

Part Number	Description
FPP-PLUGPACK3-4	3" PipePlug Packer - End
FPP-PLUGPACK4-6	4"-6" PipePlug Packer - End
FPP-PLUGPACK8	8" PipePlug Packer - End



Plug Packer

ELBOW PACKERS

Part Number	Description
FPP-PACK2EL	2" Elbow Repairs / 18" Inflate zone
FPP-PACK3EL	3" Elbow Repairs / 24" Inflate zone
FPP-PACK4EL	4" Elbow Repairs / 24" Inflate zone
FPP-PACK6EL	6" Elbow Repairs / 24" Inflate zone
FPP-PACK8EL	8" Elbow Repairs / 24" Inflate zone
FPP-PACK10EL	10" Elbow Repairs / 24" Inflate zone
FPP-PACK3X48EL	3" Elbow Repairs / 48" Inflate zone
FPP-PACK4X48EL	4" Elbow Repairs / 48" Inflate zone
FPP-PACK6X48EL	6" Elbow Repairs / 48" Inflate zone



Elbow Packers

LARGE DIAMETER PACKERS

Part Number	Description
FPP-PILLOW-1524X48	15"-24" x 48" Pillow Packer
FPP-PILLOW-1524X48FT	15"-24" x 48" Flow Through Pillow
FPP-PILLOW-3036X48	30"-36" x 48" Pillow Packer
FPP-PILLOW-4248X48	42"-48" x 48" Pillow Packer
FPP-PILLOW-6072x48	60"-72" x 48" Pillow Packer



Pillow Packer

HD PACKERS

Part Number	Description
FPP-PACK3-6-HD	(3-6 inch x 24 inch lateral repairs) Packer Dimensions: 1.80" OD x 39.5" Length
FPP-PACK3-6x48-HD	(3-4" has 48" inflation zone, 6" has 42" inflation zone) Packer Dim: 1.80" OD x 59" Length
FPP-PACK5-12-HD	(5-12 inch x 24 inch lateral repairs). Packer Dimensions: 4.18" OD x 59" Length
FPP-PACK5-12X48-HD	(5-12 inch x 48 inch lateral repairs). Packer Dimensions: 4.18" OD x 79" Length



Navigation Ball for HD Packer

HD Packer

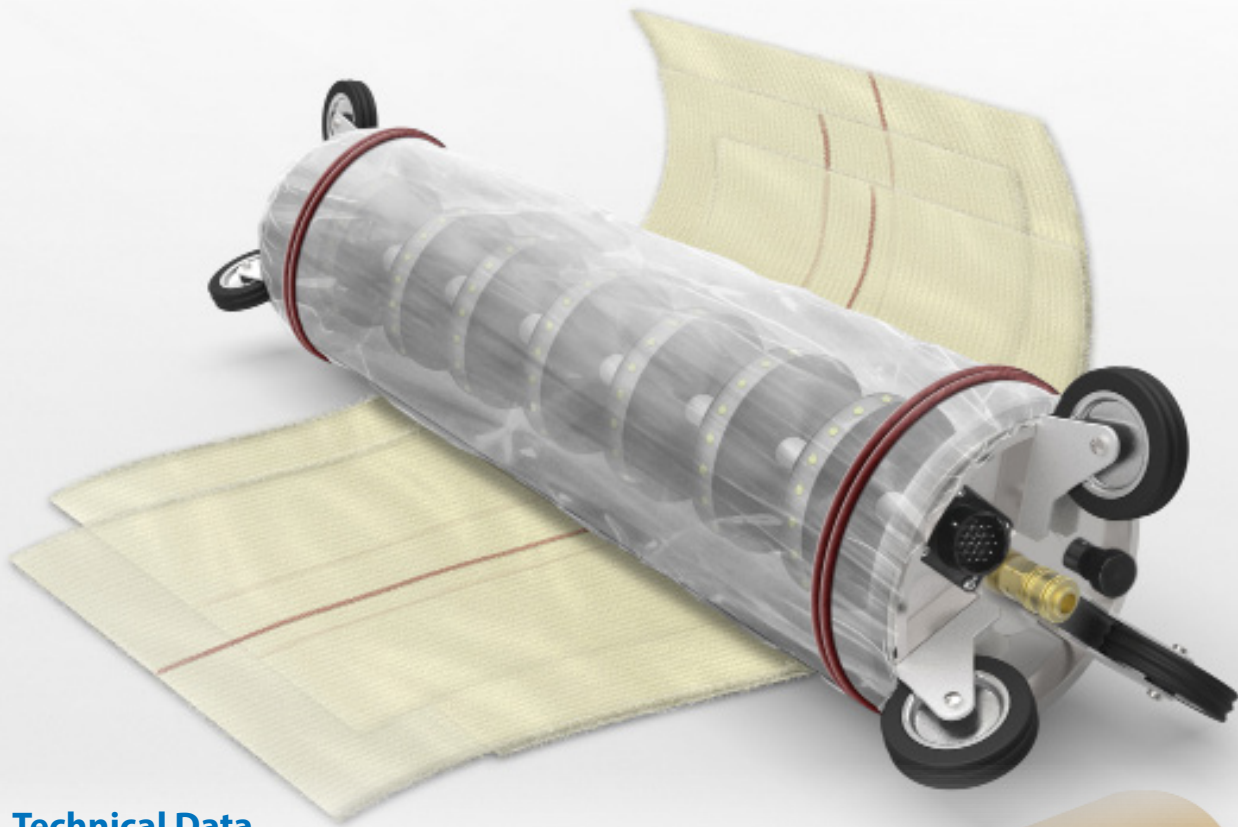
Custom Packer lengths available.

PipePatch® UV Light System



**High-Performance
Technology Offering
UV Light Cured Patches
in 10 Minutes**

**Trenchless Pipe
Rehabilitation**



Technical Data

- Complies with ASTM F 1216/ASTM F 3541
- Average wall thickness .140" for minimal pipe wall reduction
- Makes Mechanical Bond to Sewer Pipe
- Kitted system with pre-impregnated patches



PipePatch® UV Light System

Trenchless Pipe Rehabilitation

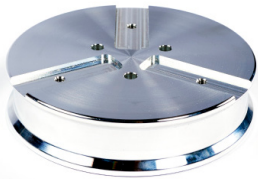
UV Light Train

Part Number	Description
UV-LIGHT TRAIN24	For 24" long patch repair
UV-LIGHT TRAIN48	For 48" long patch repair



UV End Plates

Part Number	Description
UV-END-PLATE6-8	For 6"-8" pipe diameter repairs
UV-END-PLATE10	For 10" pipe diameter repairs
UV-END-PLATE12	For 12" pipe diameter repairs



UV QUAD-CURE Bulk Resin & Fiberglass

Part Number	Description
UV-Quad-Cure40	QUADCURE UV 40lb. Bucket
UV-Quad-Cure440	QUADCURE UV 440lb. Drum
BULK-FR48x100-NF	48" x 100' Fiberglass Roll No Fold



Fiberglass Roll



QUAD-CURE Bucket



UV Control Box



UV Cable & Drum

UV Packer Bladder

Part Number	Description
UV-PACK6-8X24	6"-8" packer bladder for 24" UV light train
UV-PACK6-8X48	6"-8" packer bladder for 48" UV light train
UV-PACK6-10X24	10" packer bladder for 24" UV light train
UV-PACK10X48	10" packer bladder for 48" UV light train
UV-PACK12X24	12" packer bladder for 24" UV light train
UV-PACK12X48	12" packer bladder for 48" UV light train

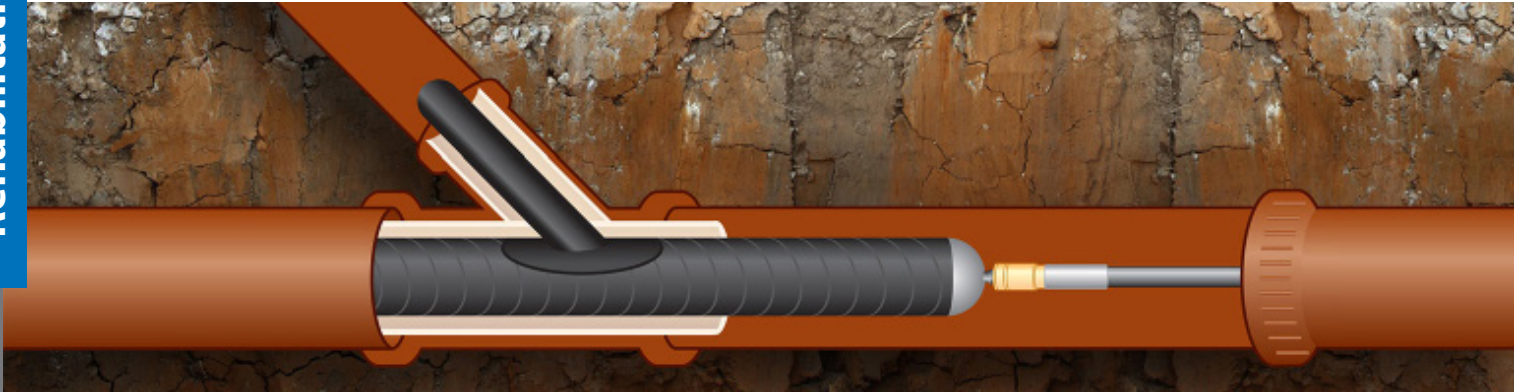


UV Equipment

Part Number	Description
UV-CABLE-DRUM164	164' Cable and Drum - connect UV Packer to Operating Unit
UV-CABLE-DRUM240	240' Cable and Drum - connect UV Packer to Operating Unit
UV-CONTROL-BOX	Operating unit for monitoring and light curing
UV-SPARE-WHEEL6	Spare wheel set (six total wheels) and fixing bolts



360° repair in both the Lateral and Main



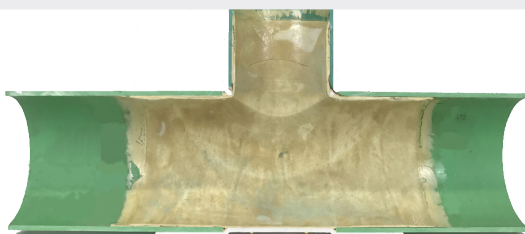
The TYGERPatch creates a mainline to lateral seal repair, without access to the homeowner's property or disrupting live flow in the mainline. The TYGERPatch mechanically bonds to all pipe types. Once installed, the system forms a smooth transition and may be used in a wide variety of configurations. The TYGERPatch is designed to extend 6" into the lateral.

TYGERPatch Lateral Seal 360° Main Tee Resin Repair Kit

Part Number	Description
FPP-8X4TEE	8" x 4" TYGERPatch Tee Kit
FPP-8X6TEE	8" x 6" TYGERPatch Tee Kit
FPP-10X4TEE	10" x 4" TYGERPatch Tee Kit
FPP-10X6TEE	10" x 6" TYGERPatch Tee Kit
FPP-12X4TEE	12" x 4" TYGERPatch Tee Kit
FPP-12X6TEE	12" x 6" TYGERPatch Tee Kit
FPP-15x4TEE	15" x 4" TYGERPatch Tee Kit
FPP-15x6TEE	15" x 6" TYGERPatch Tee Kit
FPP-18x4TEE	18" x 4" TYGERPatch Tee Kit
FPP-18x6TEE	18" x 6" TYGERPatch Tee Kit

TYGERPatch Lateral Seal 360° Main Wye Resin Repair Kit

Part Number	Description
FPP-8X4WYE	8" x 4" TYGERPatch Wye Kit
FPP-8X6WYE	8" x 6" TYGERPatch Wye Kit
FPP-10X4WYE	10" x 4" TYGERPatch Wye Kit
FPP-10X6WYE	10" x 6" TYGERPatch Wye Kit
FPP-12X4WYE	12" x 4" TYGERPatch Wye Kit
FPP-12X6WYE	12" x 6" TYGERPatch Wye Kit
FPP-15x4WYE	15" x 4" TYGERPatch Wye Kit
FPP-15x6WYE	15" x 6" TYGERPatch Wye Kit
FPP-18x4WYE	18" x 4" TYGERPatch Wye Kit
FPP-18x6WYE	18" x 6" TYGERPatch Wye Kit





Available in **SUMMER & WINTER Kits**

Trenchless Pipe Rehabilitation

TYGERPatch Lateral Repair Packers

Part Number	Description
FPP-PACK-TH-4Slim	4" Schwalm rubber LID/6" main
FPP-PACK-TH-4	4" Schwalm rubber LID
FPP-PACK-TH-6	6" Schwalm rubber LID
FPP-PACK-TY-8FT	8" Flow-through Schwalm packer
FPP-PACK-TY-10-12FT	10"-12" Flow-through Schwalm packer
FPP-PACK-TY-12-16FT	12"-16" Flow-through Schwalm packer
FPP-PACK-TY-16-20FT	16"-20" Flow-through Schwalm packer
FPP-PACK-TY-16-20	16"-20" Non Flow-through Schwalm packer
FPP-PACK-TY-16-24FT	16"-24" Flow-through Schwalm packer
FPP-PACK-TY-16-24	16"-24" Non Flow-through Schwalm packer
FPP-PACK-TY-20-28FT	20"-28" Flow-through Schwalm packer
FPP-PACK-TY-24-32FT	24"-32" Flow-through Schwalm packer

TYGERPatch Lateral Seal Top Hat Main Wye Resin Repair Kit

Part Number	Description
FPP-4Y-TH	4" TYGERPatch Top Hat Wye Kit
FPP-6Y-TH	6" TYGERPatch Top Hat Wye Kit

TYGERPatch Lateral Seal Top Hat Main Tee Resin Repair Kit

Part Number	Description
FPP-4T-TH	4" TYGERPatch Top Hat Tee Kit
FPP-6T-TH	6" TYGERPatch Top Hat Tee Kit

TYGERPatch - Equipment

Part Number	Description
FPP-REG-LAT	Regulator For Schwalm System (2 needed for TY system)
FPP-AIRHOSE150	150' Air Hose for Schwalm Packer (2 needed for TY system)
FPP-BKT8	Camera Bracket for Schwalm 8" Tee/Wye Packers
FPP-BKT10-12	Camera Bracket for Schwalm 10"-12" Tee/Wye Packers
FPP-PUSHROD-TY	Schwalm 5' Steel Push Rod
FPP-TY-Wrench	3/8" Wrench/Packer Position
Cutter System	Schwalm Robotic Cutter

*Lateral and Main repair up to 15".
Top Hat repair up to 32".*



Packer with Top Hat



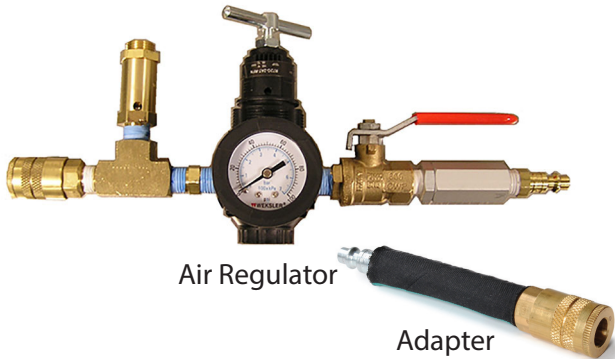
Powered By:



PipePatch® Equipment

SMALL DIAMETER EQUIPMENT

Part Number	Description
FPP-REG-ASM-2	Air Regulator (0 to 60 psi)
FPP-WIRE-MP	Green Wire Tie (100 pcs)
FPP-PULLCABLE	250' Coated Pull Cable
FPP-PUSHRODMINI	5' Push Rod - for 2" and smaller



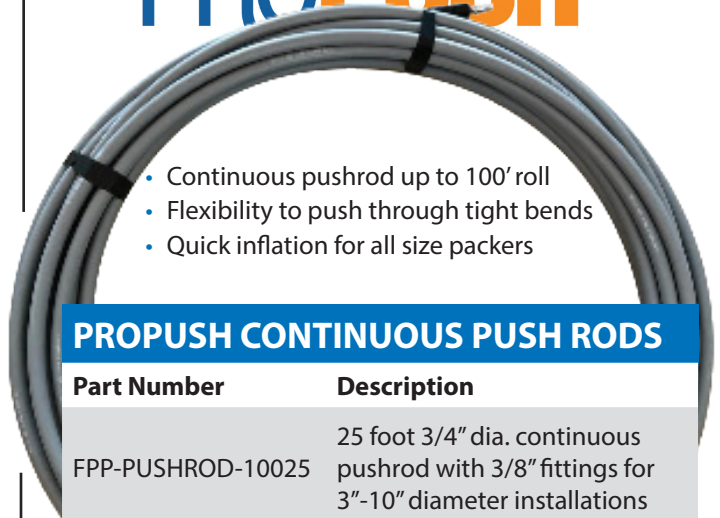
STANDARD DIAMETER EQUIPMENT

Part Number	Description
FPP-REG-ASM	3/8" Air Regulator (0 to 45 psi)
FPP-PUSHROD	3/8" - 5' PipePatch Push Rod
FPP-ADAPTER	3/8" PipePatch Flex Adapter
FPP-PULLCABLE	250' Coated Pull Cable
FPP-PULLCABLE500	500' Coated Pull Cable
FPP-TY18-MP	14" Zip Tie for 6"-10" Packer (100 pcs)
FPP-TY50-MP	36" Zip tie for 12"-15" Packer (50 pcs)
FPP-WIRE-MP	Green Wire Tie for 3" Packer (100 pcs)



Push Rods

PROPUSH



- Continuous pushrod up to 100' roll
- Flexibility to push through tight bends
- Quick inflation for all size packers

PROPUSH CONTINUOUS PUSH RODS

Part Number	Description
FPP-PUSHROD-10025	25 foot 3/4" dia. continuous pushrod with 3/8" fittings for 3"-10" diameter installations
FPP-PUSHROD-10050	50 foot 3/4" dia. continuous pushrod with 3/8" fittings for 3"-10" diameter installations
FPP-PUSHROD-10100	100 foot 3/4" dia. continuous pushrod with 3/8" fittings for 3"-10" diameter installations
FPP-PUSHROD-21075	75 foot 1" dia. continuous pushrod with 3/8" fittings for 10"-15" diameter installations
FPP-PUSHROD-21150	150 foot 1" dia. continuous pushrod with 3/8" fittings for 10"-15" diameter installations

LARGE DIAMETER Equipment & Accessories

Part Number	Description
FPP-SLV3648MP	36" Protective Sleeve for 3036x48 Pillow Packer
FPP-SLV4848MP	48" Protective Sleeve for 4248x48 Pillow Packer
FPP-REG-FAST	Fast Fill / Fast Deflate Regulator Chicago Fittings



Large Diameter Air Regulator

Pipe-Robo-Tec USA® Mechanical Seal

Available in NO, Single or Double flange

MECHANICAL SEAL PACKERS

Part Number	Description
FPP-PACK6-8MS	6"-8" Mechanical Seal Packer
FPP-PACK8-12MS	8"-12" Mechanical Seal Packer
FPP-PACK14-20MS	14"-20" Mechanical Seal Packer
FPP-PACK21-24MS	21"-24" Mechanical Seal Packer



Special Order Only.



SLEEVE:
Corrects pipe misalignment and axial bending

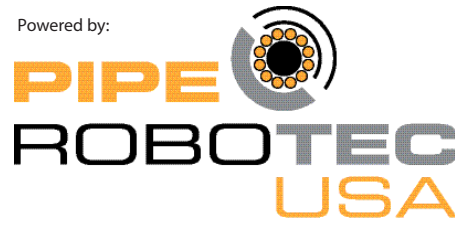


SLEEVE:
Addresses longitudinal cracking



SLEEVE:
Forms a seal between the liner surface and the old pipe

Powered by:



FIXED MECHANICAL SEAL SLEEVES

Part Number	Description
FPP-SEAL6	6" Sleeve
FPP-SEAL8	8" Sleeve
FPP-SEAL10	10" Sleeve
FPP-SEAL12	12" Sleeve
FPP-SEAL15	15" Sleeve
FPP-SEAL18	18" Sleeve
FPP-SEAL21	21" Sleeve
FPP-SEAL24	24" Sleeve

Special Order Only.

END MECHANICAL SEAL SLEEVES

Part Number	Description
FPP-END6	6" End Seal Sleeve
FPP-END8	8" End Seal Sleeve
FPP-END10	10" End Seal Sleeve
FPP-END12	12" End Seal Sleeve
FPP-END15	15" End Seal Sleeve
FPP-END18	18" End Seal Sleeve
FPP-END20	20" End Seal Sleeve
FPP-END24	24" End Seal Sleeve

Special Order Only.

MECHANICAL SEAL EQUIPMENT

Part Number	Description
FPP-WKDN8-12	Wheel Kit For 8"-12"
FPP-WKDN14-20	Wheel Kit for 14"-20"
FPP-WKDN20-24	Wheel Kit for 20"-24"
FPP-COUPPLINGROD	Coupling Rod For Mechanical Packer

Special Order Only.

Lateral Lining Consumables & Equipment

SOURCEONE LININGS

Resin types cure in the presence of steam, hot water and ambient cure. Overall cure time will range depending on temperature. Safe and easy handling.



Specialty resins for a complete range of Cured-In-Place Pipe (CIPP) applications.

QUAD-CURE® RESIN - STANDARD

Part Number	Description
S1E-QC-4115	15 Minute Epoxy - 4:1 ratio
S1E-QC-4130	30 Minute Epoxy - 4:1 ratio
S1E-QC-4160	60 Minute Epoxy - 4:1 ratio
S1E-QC-3120	20 Minute Epoxy - 3:1 ratio
S1E-QC-3145	45 Minute Epoxy - 3:1 ratio

QUAD-CURE® RESIN - ENVIRONMENTAL

Part Number	Description
UV-QUAD-CURE40	Methacrylate UV Resin

QUAD-CURE® LINER CALTUBE | PULLTAPE - RECIRC

Part Number	Description
S1E-PULLTAPE	2500 lb Pull Tape- 1000 ft.

QUAD-CURE® STANDARD LINER

Part Number	Description
S1E-QC-STANDARD-3x3-330	3"x330'x3mm w/PU coating. NW.
S1E-QC-STANDARD-4x3-330	4"x330'x3mm w/PU coating. NW.
S1E-QC-STANDARD-6x3-330	6"x330'x3mm w/PU coating. NW.
S1E-QC-STANDARD-8x3-330	8"x330'x3mm w/PU coating. NW.
S1E-QC-STANDARD-8x4.5-330	8"x330'x4.5mm w/PU coating. NW.
S1E-QC-STANDARD-10x4.5-330	8"x330'x4.5mm w/PU coating. NW.
S1E-QC-STANDARD-12x4.5-330	8"x330'x4.5mm w/PU coating. NW.

QUAD-CURE® LINER | WOVEN X

Part Number	Description
S1E-QC-WX-2-328	2"x328'x3.5mm. Transitions from 2" - 3"
S1E-QC-WX-3-328	3"x328'x3.5mm. Transitions from 3" - 4"
S1E-QC-WX-4-328	4"x328'x3.5mm. Transitions from 4" - 6"
S1E-QC-WX-6-328	6"x328'x3.5mm. Transitions from 6" - 8"
S1E-QC-WX-8-328	8"x328'x3.5mm. Transitions from 8" - 10"



Non-woven, needle punched polyester fiber capable of navigating sweeping bends. Best for open-ended (blind shots), navigates sweeping bends up to 90°.

QUAD-CURE® LINER FLEXILINER | 45

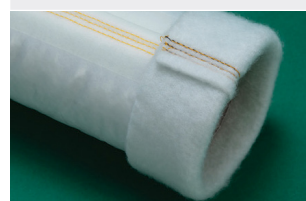
Part Number	Description
S1E-QC-Flexi45-4-330	4" x 3mm x 330' - For 45° bends
S1E-QC-Flexi45-6x3-330	6" x 3mm x 330' - For 45° bends



Non-woven needle punched PE felt liner with impermeable PVC coating. 35% extension for 45° bends.

QUAD-CURE® LINER FLEXI 4D

Part Number	Description
S1E-QC-Flexi-4D-4-330	4" x 4.5mm Navigates bends up to 90°
S1E-QC-Flexi-4D-6-330	6" x 4.5mm Navigates bends up to 90°



Non-woven, needle punched PE felt liner with an impermeable polyurethane coating. Changing circumferences up to 4 diameters (4D), navigates bends up to 90°.

QUAD-CURE® LATERAL LINER | SCRIM

Part Number	Description
S1E-QC-LL3-4-3070	30' of 3" to 70' of 4" - Scrim Reinforced
S1E-QC-LL3-4-5050	50' of 3" to 50' of 4" - Scrim Reinforced
S1E-QC-LL3-4-7030	70' of 3" to 30' of 4" - Scrim Reinforced
S1E-QC-LL4-6-1090	10' of 4" to 90' of 6" - Scrim Reinforced
S1E-QC-LL4-6-2080	20' of 4" to 80' of 6" - Scrim Reinforced
S1E-QC-LL4-6-3070	30' of 4" to 70' of 6" - Scrim Reinforced
S1E-QC-LL4-6-5050	50' of 4" to 50' of 6" - Scrim Reinforced
S1E-QC-LL4-6-7030	70' of 4" to 30' of 6" - Scrim Reinforced

Lateral Lining Consumables & Equipment

QUAD-CURE® LINER SCRIM REINFORCED



Part Number	Description
S1E-QC-Liner3-330	3"x3mm - PU Coating/ Polyester Felt
S1E-QC-Liner3x4.5-300	3"x4.5mm - PU Coating/ Polyester Felt
S1E-QC-Liner4-330	4"x3mm - PU Coating/ Polyester Felt
S1E-QC-Liner4x4.5-300	4"x4.5mm - PU Coating/ Polyester Felt
S1E-QC-Liner6-330	6"x3mm - PU Coating/ Polyester Felt
S1E-QC-Liner6x4.5-300	6"x4.5mm - PU Coating/ Polyester Felt
S1E-QC-Liner8-330	8"x3mm - PU Coating/ Polyester Felt
S1E-QC-Liner8x4.5-300	8"x4.5mm - PU Coating/ Polyester Felt

QUAD-CURE® LINER FLEXILINER 90

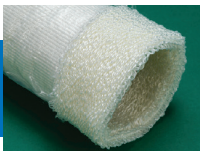


Part Number	Description
S1E-QC-Flexi90-2x2-165	2"x2mmx165' - Bends up to 90°
S1E-QC-Flexi90-2x2-330	2"x2mmx330' - Bends up to 90°
S1E-QC-Flexi90-3x2-165	3"x2mmx165' - Bends up to 90°
S1E-QC-Flexi90-3x2-330	3"x2mmx330' - Bends up to 90°
S1E-QC-Flexi90-4x2-330	4"x2mmx330' - Bends up to 90°
S1E-QC-Flexi90-5x2-330	5"x2mmx330' - Bends up to 90°
S1E-QC-Flexi90-6x2-330	6"x2mmx330' - Bends up to 90°
S1E-QC-Flexi90-3x4.5-330	3"x4.5mmx330' - Bends up to 90°
S1E-QC-Flexi90-4x4.5-330	4"x4.5mmx330' - Bends up to 90°
S1E-QC-Flexi90-5x4.5-330	5"x4.5mmx330' - Bends up to 90°
S1E-QC-Flexi90-6x4.5-330	6"x4.5mmx330' - Bends up to 90°
S1E-QC-Flexi90-8x4.5-330	8"x4.5mmx330' - Bends up to 90°



Sewn Transition Liner
Non-woven, circular looped PE, uniquely bonded to a seamless, impermeable polyurethane coating.

QUAD-CURE® LINER WOVEN



Part Number	Description
S1E-QC-W-Liner2-165	2"x165'x4.5mm - Looped PE
S1E-QC-W-Liner3-328	3"x328'x4.5mm - Looped PE
S1E-QC-W-Liner4-328	4"x328'x4.5mm - Looped PE
S1E-QC-W-Liner6-330	6"x328'x4.5mm - Looped PE
S1E-QC-W-Liner8-328	8"x328'x4.5mm - Looped PE

QUAD-CURE® LINER CALTUBE HF PVC



Part Number	Description
S1E-QC-Yellow2-328	2"x328' HF - Ultra-flexible
S1E-QC-Yellow3-328	3"x328' HF - Ultra-flexible
S1E-QC-Yellow4-328	4"x328' HF - Ultra-flexible
S1E-QC-Yellow5-328	5"x328' HF - Ultra-flexible
S1E-QC-Yellow6-328	6"x328' HF - Ultra-flexible
S1E-QC-Yellow8-328	8"x328' HF - Ultra-flexible

QUAD-CURE® LINER CALTUBE STITCHED



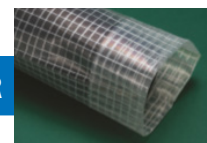
Part Number	Description
S1E-QC-Clear4-328	4"x328' - Clear Flexible
S1E-QC-Clear5-328	5"x328' - Clear Flexible
S1E-QC-Clear6-328	6"x328' - Clear Flexible
S1E-QC-Clear8-328	8"x328' - Clear Flexible
S1E-QC-Clear10-328	10"x328' - Clear Flexible
S1E-QC-Clear12-328	12"x328' - Clear Flexible

QUAD-CURE® LINER CALTUBE STITCHED



Part Number	Description
S1E-QC-Orange4-328	4"x328' - For higher heat cure
S1E-QC-Orange5-328	5"x328' - For higher heat cure
S1E-QC-Orange6-328	6"x328' - For higher heat cure
S1E-QC-Orange8-328	8"x328' - For higher heat cure
S1E-QC-Orange10-328	10"x328' - For higher heat cure
S1E-QC-Orange12-328	12"x328' - For higher heat cure

QUAD-CURE® LINER PRELINER



Part Number	Description
S1E-QC-PreLiner4-330	4"x330' High Strength Cord Grid
S1E-QC-PreLiner5-330	5"x330' High Strength Cord Grid
S1E-QC-PreLiner6-330	6"x330' High Strength Cord Grid
S1E-QC-PreLiner8-330	8"x330' High Strength Cord Grid

Lateral Lining Consumables & Equipment



MICROCURE® LED CIPP CURING SYSTEM

PART NUMBER	DESCRIPTION
MC-3-6SYSTEM	MICROcure LED CIPP Curing System <i>Base System - 3"- 6" Pipe</i>
MC-3-12SYSTEM	MICROcure LED CIPP Curing Solution <i>Full System - 3"-12" Pipe</i>
MC-8-12UPGRADE	MICROcure LED CIPP Curing Solution <i>Base System - 8"-12" Pipe</i>
MC-04601920	Compressed Air Refrigeration Dryer <i>(Included in Base & Full Systems)</i>
MC-04602200	Camera Module for Light Source <i>(Included in Base System)</i>
MC-04602100	Light Source - 4 x 100 W <i>(Included in Base & Full Systems)</i>
MC-04602150	Light Source - 8 x 100 W <i>(Included in Base & Full Systems)</i>
MC-04602170	Wheel-set 8" (DN200) <i>(Included in Full Systems)</i>
MC-04601985	Y-Pipe Extension - 8"-12" Pipe <i>(Included in Full System)</i>
MC-0000000	Y-Pipe 8"
MC-04602592	32' Cable Extension
MC-04602480	Additional Monitor



ARMOR® THUNDER SLUICE 200

PART NUMBER	DESCRIPTION
S1E-TS200	Thunder Sluice 200 - 6" Storz
S1E-TS-CON	Control Unit
S1E-TS-SPS	Spray Station

400 SERIES



600 SERIES



800 SERIES



ARMOR® THUNDER DRUM 400

PART NUMBER	DESCRIPTION
S1E-TD400	Thunder Drum 400 - 6" Storz

ARMOR® DRUM 600

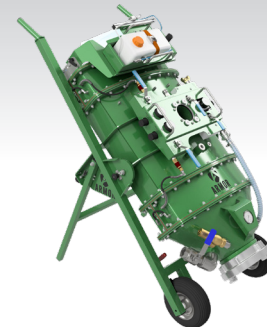
PART NUMBER	DESCRIPTION
S1E-TD600	Thunder Drum 600 - 8" Storz

ARMOR® THUNDER DRUM 800

PART NUMBER	DESCRIPTION
S1E-TD800	Thunder Drum 800 - 8" Storz

ACCESSORIES

PART NUMBER	DESCRIPTION
S1E-STZ6	6" Storz Wrench
S1E-STZ6-TH	6" Storz to Threaded Coupling
S1E-6-8-ADPT	6" Storz to 8" Storz Adaptor
S1E-8-2-3-Adapt	8" Storz - 2 Cleats / 8" Storz - 3 Cleats
S1E-STZ8	8" Storz Wrench
S1E-STZ8-TH	8" Storz to Threaded Coupling

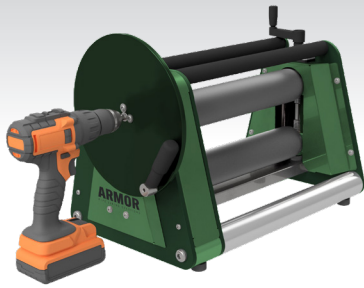


*Spray Station not included

ARMOR® THUNDER SLUICE 300

PART NUMBER	DESCRIPTION
S1E-TS300	Thunder Sluice 300 - 8" Storz
S1E-TS-CON	Control Unit
S1E-TS-SPS	Spray Station <i>(SOLD SEPARATELY)</i>

Lateral Lining Consumables & Equipment



*Drill not included

ARMOR® CALIBRATION UNIT - MICRO

PART NUMBER	DESCRIPTION
S1E-WO-MICRO	Calibration Unit Micro - Manual



ARMOR® CALIBRATION UNIT - MINI

PART NUMBER	DESCRIPTION
S1E-WO-MINI	Calibration Unit Mini - Electric

NOZZLES - STRAIGHT

NOZZLES COMPATIBLE WITH THUNDER DRUM 400 & THUNDER SLUICE 200

PART NUMBER	DESCRIPTION
S1E-STZ6-2	2" Straight Nozzle - 6" Storz
S1E-STZ6-3	3" Straight Nozzle - 6" Storz
S1E-STZ6-4	4" Straight Nozzle - 6" Storz
S1E-STZ6-5	5" Straight Nozzle - 6" Storz
S1E-STZ6-6	6" Straight Nozzle - 6" Storz
S1E-STZ6-8	8" Straight Nozzle - 6" Storz

NOZZLES COMPATIBLE WITH THUNDER DRUMS 600-800 AND THUNDER SLUICE 300

PART NUMBER	DESCRIPTION
S1E-STZ8-10	10" Straight Nozzle - 8" Storz
S1E-STZ8-12	12" Straight Nozzle - 8" Storz

NOZZLES - 90° BENDS

NOZZLES COMPATIBLE WITH THUNDER DRUM 400 & THUNDER SLUICE 200

PART NUMBER	DESCRIPTION
S1E-STZ6-2-90	2" 90° Nozzle - 6" Storz
S1E-STZ6-3-90	3" 90° Nozzle - 6" Storz
S1E-STZ6-4-90	4" 90° Nozzle - 6" Storz
S1E-STZ6-5-90	5" 90° Nozzle - 6" Storz
S1E-STZ6-6-90	6" 90° Nozzle - 6" Storz
S1E-STZ6-8-90	8" 90° Nozzle - 6" Storz

NOZZLES COMPATIBLE WITH THUNDER DRUMS 600-800 AND THUNDER SLUICE 300

PART NUMBER	DESCRIPTION
S1E-STZ8-10-90	10" 90° Nozzle - 8" Storz
S1E-STZ8-12-90	12" 90° Nozzle - 8" Storz



PICOTE® CALIBRATION UNIT - MIDI

PART NUMBER	DESCRIPTION
S1E-WETOUT-PKG	Midi Roller Wet Out Station Package
S1E-WETOUT-MIDI-RS-US	Midi Roller Wet Out Station
S1E-WETOUT-MIDI-ROLLER-US	Midi Roller Hybrid - 2" - 9" Liners



HOT BOX

PART NUMBER	DESCRIPTION
S1E-HOTBOX	Hot Box - without Pump
S1E-HOTBOX HOSE SET	(2) 50' Hoses / (1) 10' Hose

Lateral Lining Trial Program, Training & Education

Trenchless Pipe Rehabilitation

SOURCEONE LININGS



Lateral Lining Trial Program

At Source One Environmental (S1E), our goal is to provide innovative solutions in the water management and infrastructure rehabilitation markets. Our products are only a portion of the equation – the ability to offer proactive solutions for our customers and provide exceptional training is what S1E ultimately strives for.

FREE In-House Demo!

Designed for individuals that have limited or no lateral lining experience.

1 day In-House classroom training and demonstration of equipment and materials. S1E will provide all consumables and equipment for the demonstration, along with meals. Accommodations (travel fees, lodging, etc.) will be the responsibility of the customer.

In-Field Demo

Designed for individuals with basic to moderate lateral lining experience.

In-Field Demo with an S1E technician covering everything from equipment to installation techniques. This demonstration provides the ability for customers to see the consumables and equipment used in live applications.

Pricing:

- \$2,200 – includes 50 ft. of consumables*
- Additional \$700.00 for 51-100 ft.
- Travel fee of \$150.00 / day (includes meals, mileage, hotel)
- Day of return - \$75.00

* Customer is responsible for the shipping of consumables and equipment. A pre-trip report, signed agreement, signed waiver, and payment MUST be completed prior to training date. If equipment is purchased during the training, then the training fee will be rolled into the cost of the equipment.

S1E TRAINING & EDUCATION

S1E offers free on-site PipePatch certification to Municipalities, Contractors and Plumbers who have purchased a system. S1E Technicians ensure that your installers are comfortable and confident with every aspect of the installation process. Our commitment to your success does not end with a purchase. The S1E team will go the extra mile with your application assistance, so you can be *the* in-field solution provider.



CONSULTATIONS IN:

WATER MANAGEMENT
INSPECTION TECHNOLOGY
PIPEPATCH CERTIFICATION
TRENCHLESS PIPE REHABILITATION

SilverBack XL Flexible Couplings



**EXTRA Length.
EXTRA Strength.**

Trenchless Pipe
Rehabilitation

XL COUPLINGS

Ideal for Pipe Bursting & Ramming

The SilverBack XL is built to be stronger, longer and more durable than any coupling in the market. Ideal for ramming or bursting, this product will create greater confidence in your underground pipe connections.



This product can be custom ordered to fit most common sewer pipe sizes. Call today to learn more!

Part Number	Description	A	B	C
		in	in	in
SBXL144	4" Clay to 4" Plastic	5.40	4.50	10.00
SBXL244	4" Plastic to 4" Plastic	4.50	4.50	10.00
SBXL166	6" Clay to 6" Plastic	7.50	6.63	10.00
SBXL266	6" Plastic to 6" Plastic	6.63	6.63	10.00
SBXL188	8" Clay to 8" Plastic	10.00	6.63	10.00
SBXL288	8" Plastic to 8" Plastic	8.63	8.63	10.00
SBXL21010	10" Plastic to 10" Plastic	10.75	10.75	10.00
SBXL21212	12" Plastic to 12" Plastic	12.75	12.75	10.00



We carry a complete line of Picote products to make your job easier. We have everything you need for fast and efficient drain cleaning and reinstatements.



LINING / MILLING MACHINES CUTTERS / CHAINS / GRABBERS TWISTERS / CLEANERS / COATINGS RESINS / BRUSHES / PARTS

SHAFTS, SHAFT SOCKETS & ADAPTERS

Part Number	Description
P - 131000065	Shaft Socket For Drill - 1/4"
P - 131000125	Shaft Socket For Drill - 1/3"
P - 131000085	Shaft Socket For Drill - 1/2"
P - 1311125080	Adapter - 1/2" / 1/3"
P - 9123050001	Shaft Connector - 1/3" / 1/3"
P - 1313001285	Shaft Connector 1/2" / 1/3"
P - 1313002125	Shaft Connector - 1/2" / 1/2"
P - 1313002185	Shaft Connector 3/4" / 3/4"

1/4" Shaft

P - 1312020065025	1/4" / 25 ft.
P - 1312020065050	1/4" / 50 ft.

1/3" Shaft with thick casing

P - 1312030085010	1/3" / 33 ft.
P - 1312030085025	1/3" / 25 ft.
P - 1312030085050	1/3" / 50 ft.
P - 1312030085075	1/3" / 75 ft.
P - 1312030085100	1/3" / 100 ft.

1/2" Shaft

P - 1312020125010	1/2" / 32 ft.
P - 1312020125025	1/2" / 25 ft.
P - 1312020125050	1/2" / 50 ft.
P - 1312020125075	1/2" / 75 ft.
P - 1312020125100	1/2" / 100 ft.

1/2" Shaft with thick casing

P - 1312021125050	1/2" / 50 ft.
P - 1312021125075	1/2" / 75 ft.
P - 1312021125100	1/2" / 100 ft.

3/4" Shaft

P - 1312021180011	3/4" / 36 ft. extension
P - 1312021180020	3/4" / 67 ft.

PICOTE LINING CANNON

Part Number	Description
P-2360000001US	Original Lining Cannon
P-2360000003US	Mini Lining Cannon
P-2360000004US	Cannon Fast Cap
P-900000504	Inversion Head 2"
P-900000505	Inversion Head 3"
P-900000506	Inversion Head 4"

PICOTE MILLER SYSTEMS

Part Number	Description
P - 3560042012US	Maxi Miller Power Plus
P - 3560032012US	Maxi Miller - 1/2" shaft, 100ft range
P - 3551031220US	Super Midi Miller - 1/2" shaft, 65ft range
P - 3540000817US	Mini Miller - 1/3" shaft, 55ft range
P - 3530000812US	Micro Miller - 1/3" shaft, 39ft range
P - 3540000816US	Mini Cleaner - Cleaning Package
P - 3540000818US	Mini Cleaner - Cutting Package

Ask about our Picote Full-Lineup Product catalog available now.

SLEEVES & BEARINGS

Part Number	Description
P - 93212329085SB	Sleeve, 1/3" THICK casing
P - 9312319125SB	Sleeve, 1/2"
P - 93212320125SB	Sleeve, 1/2" THICK casing
P - 93212319125BS	Bearing, 1/2" (Pkg of 10)

STEERING AXLE & FINE TUNING TOOLS

Part Number	Description
P - 1100100055	Steering Axle 55
P - 1100200001	Bearing for Steering Axle
P - 1312024125	Smart Steering Guide 4"/6" with bearing
P - 1312025125	Smart Steering Guide 6"/8" with bearing
P - 1100500040	Counter Weight Small
P - 1100500060	Counter Weight Large
P - 1350150405	Steering Wire 328 ft./100m
P - 1350000125	Wire Hook for 1/2" shaft
P - 1350000085	Wire Hook for 1/3" shaft

TOOLS

Part Number	Description
P - 1100400001	Bearing Cleanser
P - 1350000005	Pliers
P - 1350000007	Cutter For Steering Wire
P - 1350000018	Shaft Rounder
P - 1350000006	Sheath Cutter 1
P - 1350000011	Sheath Cutter 2
P - 1350000012	Cutter For Side Grinding Panels
P - 1350000008	Hex Key 4mm
P - 1350000009	Hex Key 3mm
P - 1350000010	Hex Key 2.5mm
P - 1350000013	Combo Hex Key 1-6mm
P - 1350000100	Screws for hub disc - 12 pieces
P - 1350000001	Wrench 8mm

REPLACEMENT PARTS

Part Number	Description
P - 9550000034	Strain Relief Midi Miller
P - 9560000034	Strain Relief Maxi Miller

SMART CUTTER STARTER PACKAGES

Part Number	Description
P - 1010000050US	Starter Package 2"
P - 101000051SUS	Starter Package 2" with Twister
P - 1010000070SAUS	Starter Package 3" Aluminum
P - 1010000052SA	Starter Package 3" Aluminum with Twister
P - 1010000100AUS	Starter Package 4" Aluminum
P - 1010000150AUS	Starter Package 6" Aluminum
P - 1010000200AUS	Starter Package 8" Aluminum

SMART CUTTER HUBS

Part Number	Description
SIX-PANEL HUBS	
P - 1001250100A	HUB 6-panel 4" & 6" for 1/2" shaft
P - 1001250150A	HUB 6-panel 6" & 8" for 1/2" shaft
FOUR-PANEL HUBS	
P - 1000835050A	HUB Aluminum 3" short for 1/3" shaft
P - 1001235050A	HUB Aluminum/3" short for 1/2" shaft
P - 1001235075A	HUB Aluminum 3" for 1/2" shaft
P - 1001240100A	HUB Aluminum 4" for 1/2" shaft
P - 1001240150A	HUB Aluminum 6" for 1/2" shaft
P - 1001240200A	HUB Aluminum 8" for 1/2" shaft
TWO-PANEL HUBS	
P - 1000820050	HUB 2" narrow with 2 panels for 1/3" shaft
P - 1000820075	HUB 3" narrow with 2 panels for 1/3" shaft
NO WEDGE	
P - 1000612025	HUB 6.5x12x25 no wedge for 1/4" shaft
P - 1000615025	HUB 6.5x15x25 no wedge for 1/4" shaft
P - 1000615030	HUB 6.5x15x30 no wedge for 1/4" shaft
P - 1000615040	HUB 6.5x15x40 no wedge for 1/4" shaft
P - 1000820040	HUB 8.5x20x40 no wedge for 1/3" shaft
P - 1000820060	HUB 8.5x20x60 no wedge for 1/3" shaft

SMART CUTTER HUB DISCS

Part Number	Description
P - 1000200020	Wedged Hub Disc
P - 1000200035	Hub Disc Small
P - 1000200040	Hub Disc Large
P - 1000200050	Hub Disc XL (6-panel)
P - 1000210035	Steering Hub Disc Small
P - 1000210040	Steering Hub Disc Large

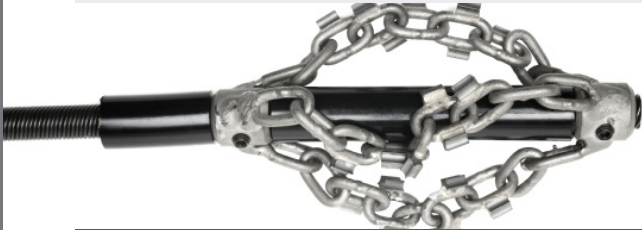
Picote Systems

Ask about our Picote Full-Lineup Product catalog available now.

Drain Cleaning
& Restatements

ORIGINAL CHAIN STANDARD MODEL

Part Number	Description
P - 1380065032	1¼" Original Chain for ¼" shaft
P - 1380084050	2" Original Chain for ⅓" shaft
P - 1380084070	3" Original Chain for ⅓" shaft
P - 1380084100	4" Original Chain for ⅓" shaft
P - 1380084150	6" Original Chain for ⅓" shaft
P - 1380105070	3" Original Chain - 10mm
P - 1380105100	4" Original Chain - 10mm
P - 1380105150	5-6" Original Chain - 10mm
P - 1380125070	3" Original Chain for ½" shaft
P - 1380125100	4" Original Chain for ½" shaft
P - 1380125125	5" Original Chain for ½" shaft
P - 1380125150	6" Original Chain for ½" shaft
P - 1380125200	8" Original Chain for ½" shaft
P - 1380125225	9" Original Chain for ½" shaft



ORIGINAL CHAIN PREMIUM MODEL

Part Number	Description
P - 1380084050U	2" Original Premium for ⅓" shaft (2 links)
P - 1380184050U	2" - 8mm Original Premium (3 links)
P - 1380084070U	3" Original Premium for ⅓" shaft
P - 1380084100U	4" Original Premium for ⅓" shaft
P - 1380084150U	5-6" Original Premium for ⅓" shaft
P - 1380125070U	3" Original Premium for ½" shaft
P - 1380125100U	4" Original Premium for ½" shaft
P - 1380125150U	5-6" Original Premium for ½" shaft
P - 1380125200U	8" Original Premium for ½" shaft
P - 1380125225U	9" Original Premium for ½" shaft
P - 1380185100U	4" Original Premium for ¾" shaft
P - 1380185150U	5-6" Original Premium for ¾" shaft
P - 1380185200U	8" Original Premium for ¾" shaft
P - 1380185250U	9-10" Original Premium for ¾" shaft
P - 1380185300U	12" Original Premium for ¾" shaft

CYCLONE CHAIN STANDARD MODEL

Part Number	Description
P - 1381084075	3" Cyclone Circular Chain for ⅓" shaft
P - 1381084100	4" Cyclone Circular Chain for ⅓" shaft
P - 1381084125	5" Cyclone Circular Chain for ⅓" shaft
P - 1381084150	6" Cyclone Circular Chain for ⅓" shaft
P - 1381105070	3" Cyclone Circular Chain for 10mm shaft
P - 1381105100	4" Cyclone Circular Chain for 10mm shaft
P - 1381105125	5" Cyclone Circular Chain for 10mm shaft
P - 1381105150	6" Cyclone Circular Chain for 10mm shaft
P - 1381125075	3" Cyclone Circular Chain for ½" shaft
P - 1381125100	4" Cyclone Circular Chain for ½" shaft
P - 1381125125	5" Cyclone Circular Chain for ½" shaft
P - 1381125150	6" Cyclone Circular Chain for ½" shaft
P - 1381125200	8" Cyclone Circular Chain for ½" shaft
P - 1381125225	9" Cyclone Circular Chain for ½" shaft
P - 1381125250	10" Cyclone Circular Chain for ½" shaft

CYCLONE CHAIN STANDARD MODEL

Part Number	Description
P - 1381084075	3" Cyclone Circular Chain for ⅓" shaft
P - 1381084100	4" Cyclone Circular Chain for ⅓" shaft
P - 1381084125	5" Cyclone Circular Chain for ⅓" shaft
P - 1381084150	6" Cyclone Circular Chain for ⅓" shaft
P - 1381105070	3" Cyclone Circular Chain for 10mm shaft
P - 1381105100	4" Cyclone Circular Chain for 10mm shaft
P - 1381105125	5" Cyclone Circular Chain for 10mm shaft
P - 1381105150	6" Cyclone Circular Chain for 10mm shaft
P - 1381125075	3" Cyclone Circular Chain for ½" shaft
P - 1381125100	4" Cyclone Circular Chain for ½" shaft
P - 1381125125	5" Cyclone Circular Chain for ½" shaft
P - 1381125150	6" Cyclone Circular Chain for ½" shaft
P - 1381125200	8" Cyclone Circular Chain for ½" shaft
P - 1381125225	9" Cyclone Circular Chain for ½" shaft
P - 1381125250	10" Cyclone Circular Chain for ½" shaft



GRABBERS

Part Number	Description
P - 2370000001US	Picote Grabber
P - 2370000002	Picote Grabber extension 10 meters
P - 2370000003	Grabber Jaw Set 1
P - 2370000004	Grabber Jaw Set 2
P - 2370000010US	Picote Large Grabber US
P - 2370000011	Large Grabber Jaw Set 1
P - 2370000012	Large Grabber Extension 10 meters

GRABBERS

Part Number	Description
P - 1360080050	Mini Smart Sweeper 2" for 1/3" shaft
P - 1360080051	Smart Sweeper Head 1.57"-2" for 1/3" shaft
P - 1360080075	Mini Smart Sweeper 3" for 1/3" shaft
P - 1360120100	Mini Smart Sweeper 4" for 1/2" shaft

SMART SPIDER

Part Number	Description
P - 1390125102	4" Smart Spider
P - 1390125152	6" Smart Spider
P - 1390100001	Smart Spider 4" legs
P - 1390100002	Smart Spider 6" legs
P - 1390100005	Smart Spider Rubber Flex
P - 1390100004	Smart Spider Axle

TWISTER MINI

Part Number	Description
P - 1230000052	2" Twister Mini for 1/3" shaft
P - 1230000072	3" Twister Mini for 1/3" shaft
P - 1230000371	3" Twister Mini for 1/2" shaft/unlined pipe
P - 1230000471	3" Twister Mini for 1/2" shaft/lined pipe

TWISTERS

Part Number	Description
P - 1230075100Y	4" Twister for lined pipe (FP 3")
P - 1230085100Y	4" Twister for unlined pipe (FP 3.3")
P - 1230115150Y	6" Twister for lined pipe (FP 4.5")
P - 1231125150Y	6" Twister for unlined pipe (FP 5")
P - 1230175200Y	8" Twister (FP 7")

TWISTER EXPRESS

Part Number	Description
P - 1233085102	4" Twister Express for unlined pipe (Front Drill Head 3.3")
P - 1233075102	4" Twister Express for lined pipe (Front Drill Head 3")

TWISTER LINER REMOVERS

Part Number	Description
P - 1233075100	4" Liner Remover for lined pipe (FP 3")
P - 1233085100	4" Liner Remover for unlined pipe (FP 3.3")
P - 1231115150Y	6" Liner Remover for lined pipe (FP 4.5")
P - 1230125150Y	6" Liner Remover for unlined pipe (FP 5)

TWISTER REPLACEMENT PARTS

Part Number	Description
P - 1230000051	Front Drill Head 3 Twister Mini 2" KIT
P - 1230000071	Front Drill Head 3 Twister Mini 3" KIT
P - 1300213085	Front drill head 3.3" plastic guard for Twister Express
P - 1300213075	Front drill head 3" plastic guard for Twister Express
P - 1300212085	Front drill head 3.3" with plastic guards
P - 1300212075	Front drill head 3" with plastic guards
P - 1210410075	Front Metal Panel 3" Liner Remover 3mm
P - 1210410085	Front Metal Panel 3.35" Liner Remover 3mm
P - 1210410115	Front Metal Panel 4.5" Liner Remover 3mm
P - 1210410125	Front Metal Panel 5" Liner Remover 3mm
P - 1300214040	Front Drill Head 4 Flat Liner Remover 40mm/1.6"

SIDE GRINDING PANELS (10 PANELS)

Part Number	Description
P - 1201040060	Side Grinding Panel No Wedge 1 1/2" x 2 1/3"
P - 1201050100	Side Grinding Panel No Wedge 2" x 4"
P - 1200050100	Side Grinding Panel with Wedge 2" x 4"
P - 1200075125	Side Grinding Panel with Wedge 3" x 5"
P - 1200100100	Side Grinding Panel with Wedge 4" x 4"
P - 1200100150	Side Grinding Panel with Wedge 4" x 6"
P - 1200150150	Side Grinding Panel with Wedge 6" x 6"
P - 1200150200	Side Grinding Panel with Wedge 6" x 8"
P - 1200150250	Side Grinding Panel 6" x 10"
P - 1200200300	Side Grinding Panel with Wedge 8" x 12"

Picote Systems

Ask about our Picote Full-Lineup Product catalog available now.

Drain Cleaning
& Reinstatements

(877) 450-3701 • www.S1Eonline.com

POLISHING PANELS (10 PANELS)

Part Number	Description
P - 1240050100	Polishing Panel with Wedge 2"x4"
P - 1240075100	Polishing Panel with Wedge 3"x4"
P - 1240100125	Polishing Panel with Wedge 4"x5"
P - 1240100150	Polishing Panel with Wedge 4"x6"

PIPE CUTTING PANELS

Part Number	Description
P - 1250000070	3" Panel Package - 4 panels
P - 1250000100	4" Panel Package - 4 panels & centralizers
P - 1250000150	6" Panel Package - 4 panels & centralizers
P - 1250100100	Centralizer package 4" (3 parts)
P - 1250150150	Centralizer package 6" (3 parts)
P - 9125000200	Pipe Cutter 8" spare panels (6 panels)
P - 1250000101	Pipe Cutter 4" Ultra Flex
P - 1250000151	Pipe Cutter 6" Ultra Flex
P - 1250000200	Pipe Cutter 8" Ultra Flex

PANELS FOR MINI CLEANER (10 PANELS)

Part Number	Description
P - 1201025040	Side grinding panel 1 1/4" package
P - 1201030050	Side grinding panel 40mm package
P - 1240035045	Cleaning panel 1 1/4" package
P - 1240040050	Cleaning Panel 40mm package

FRONT PANELS & DRILL HEADS

Part Number	Description
P - 1210310055	Front Metal Panel 2.2"
P - 1210310075	Front Metal Panel 3"
P - 1210310085	Front Metal Panel 3.3"
P - 1210310115	Front Metal Panel 4.5"
P - 1210310125	Front Metal Panel 5"
P - 1210310175	Front Metal Panel 7"
P - 1220210055	Front Plastic Panel 2.2"
P - 1220210075	Front Plastic Panel 3"
P - 1220210085	Front Plastic Panel 3.3"
P - 1220210125	Front Plastic Panel 5"
P - 1300212035	Front Drill Head 3 Ridged 1.4"

SPECIAL DRILL HEAD CUTTERS

Part Number	Description
P - 1310820029	Special Drill Head Cutter 8x20x29 - 1/3" shaft
P - 1310812029	Special Drill Head PVC 8x23x29 - 1/3" shaft
P - 1310812042	Special Drill Head PVC 8x20x42 - 1/3" shaft
P - 1310813055	Special Drill Head PVC 8x30x55 - 1/3" shaft
P - 1311213055	Special Drill Head PVC 12x30x55 - 1/3" shaft
P - 1311214071	Special Drill Head PVC 12x40x55 - 1/3" shaft
P - 1311215091	Special Drill Head PVC 12x50x91 - 1/3" shaft

PICOTE COATING SYSTEM

Part Number	Description
P - 2220100002	Mini Coating Pump
P - 2220100004	Resin Supply Hose - 82ft
P - 2220100003	Delivery Hose - 82ft
P - 2220100007	Hose connector with hose clamps
P - 9500000382	Hose clamp 10mm
P - 9500000381	Hose clamp 13mm
P - 900000338	Brush stopper 1/3"
P - 2220200003	Pumping Hose package 10 pcs
P - 2220200005	MXM Coating Pump delivery hose 200m/60ft: 200m in a package

RESINS & BRUSHES

Part Number	Description
P - 2220200004	Coating Resin Cup package 10pcs
P - 2110000501	Coating Resin - 12oz
P - 2110000502	Coating Resin - 17lb 11oz
P - 2110000503	Coating Resin - 35lb 5oz
P - 2120000037	Brush 1 1/4" pipe (for 1/4" shaft)
P - 2120000050	Brush for 1 1/4" pipe (for 1/3" shaft)
P - 2120000075	Brush for 2" pipe (for 1/3" shaft)
P - 2120000100	Brush for 3" pipe (for 1/3" shaft)
P - 2120000125	Brush for 4" pipe (for 1/3" shaft)
P - 2120000175	Brush for 6" pipe (for 1/3" shaft)
P - 2120000220	Brush for 8" pipe (for 1/3" shaft)



PIPE TREKKER



The Trenchless industry's first truly portable, battery-operated pipe inspection crawler system

Utilizing over a decade of design principles from building underwater robotics, our pipe crawlers are built to outlast and outperform. Constructed of machined aluminum and steel alloy, Pipe Trekker's rugged crawler configurations get you more time in the field, and less time in the shop. Our crawlers are piloted through extremely intuitive controller systems, requiring minimal training before an operator can comfortably deploy. Unmatched portability, versatility, and accessibility allows for limitless applications of pipe cleaning, lining, or televising crews rather than relying on a dedicated TV truck crew for all inspections.

Magnetically Coupled Drives
High Definition Camera
Hybrid Power Options
Fully Submersible
Battery Operated
Durable



The world's first and only fully battery-operated, portable pipe crawler to move quickly and easily to even the most remote manholes.

PIPE TREKKER CAMERA SYSTEMS

Part Number	Description
PT-A-200-BASE	Crawler Body, 8" wheels, Lifting Kit, Charger, Batteries and Carry Case
PT-A-200S	Base system, PTZ 1080p IP Camera, Elevating Arms, 7" LCD Hand Control
PT-A-200X	Base system, PTZ 1080p IP Camera, Elevating Arms, 10" Touch Screen

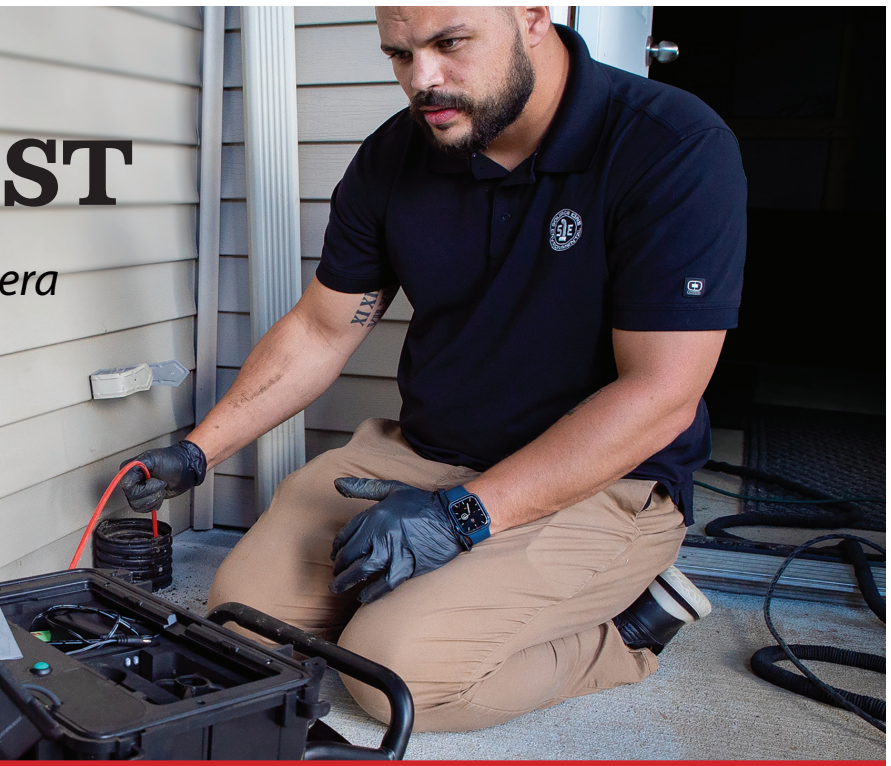
S1E Mainline Camera System

CONQUEST

Pipeline Inspection Camera

A Source One Environmental Product

Inspection
Systems



PRODUCT OVERVIEW

Delivering great performance in a compact portable design, the Conquest sewer camera is an open-reel camera system for general inspection and locating jobs in 2" to 4" pipe sizes. It features a waterproof, stainless steel camera head and 100-foot fiberglass push rod. The 7-inch monitor, SD card recording, easily interchangeable parts and 6-hour battery provides the portability and versatility to handle any inspection job.

PARTS AND ACCESSORIES

Part Number	Description
CNQ-CAMSYS	Conquest Camera
CNQ-C23MT0	23mm Camera Head with 512 Hz Sonde
CNQ-C23MTS	23mm Camera Head with 512 Hz Sonde and Self-Leveling
CNQ-A18001	Control Box
CNQ-R1330U	Cable Reel with 6.8mm Push Rod, 30m
CNQ-M1330U	Rotating Cable Reel and Metal Frame
CNQ-F6830N	6.8mm Push Rod, 30m
CNQ-A18002	Slip Ring with Meter Counter
CNQ-CAMBTRY	Battery Pack
CNQ-A18006	Display Panel and LCD Screen
CNQ-8-901	Plastic Guide (80mm) for 23mm Camera Head
CNQ-8-923	Plastic Guide (46mm) for 23mm Camera Head
CNQ-K7924K	Wireless Keyboard and Adapter for Text Input on Monitor
CNQ-A18007	6-pin Connection Cable from Control Box to Cable Reel
CNQ-2-312	Conquest Power Adapter, DC 12V 1.5A
CNQ-A18014	Cable Stop Housing
CNQ-A18021	Conquest DC Charging Dock
CNQ-A18023	Conquest Push Rod Cable Guide
CNQ-A18024	Control Box Receptacle

FEATURES

- Pipe sizes: 2" to 4"
- 6.8mm (1/4") push rod diameter
- 100' push rod length
- 23mm camera head
- Built-in 512 Hz sonde
- Smart Braking System
- Weight: 23 lbs
- IP68 waterproof level
- 100'/30m fiberglass push rod
- 7" monitor with recording
- Stainless steel camera head
- SD card and reader included
- On-screen distance counter
- Rechargeable battery lasts up to 6 hours
- Wireless keyboard for text input (English)
- Whole system waterproof (box closed)
- Power adapter and car charger included

S1E Video Inspection System



S1E Combo

- Includes a mini camera head that is interchangeable with the S1E MS11-NG2 mid-size camera head
- Includes a protective case for both heads and all the guides
- Kit includes the mini camera and the ice ball guide with 3" outside diameter, dielectric grease, and a slot for everything included with the S1E MS11-NG2

S1E MS11-NG2

- Designed for 3" - 6" lines
- 150' or 200' pushrod
- 6.5" daylight-readable monitor
- Includes interchangeable 1.5" dia. fixed-position, self-leveling camera head
- Powder-coated aluminum frame
- 13"W x 20"L x 21"H and weighs 45 pounds
- USB flash drive and Wi-Fi router
- Set of ice-ball camera guides with outside diameters of 1 1/2", 1 7/8", and 2 1/4"

Push Camera System

Part Number	Description
S1E-MS11-NG2	3"-6" Lines w/ 200ft Push Rods / 45lbs.
S1E-MS11-COMBO	1-1/2"-6" Lines w/ Combo Kit

S1E LOCATOR PACKAGE

- Our RL8800 Complete Pipe Locator Package bundles our updated MT 512+ Locator and LineFinder Transmitter so you can pinpoint buried pipe defects.
- With the LineFinder box the Locator can also detect a signal along the water pipes or sewer lines, buried power cables, CATV cable, gas and, telephone cables, or fiber optic cables with sheath.



S1E-MT512+ HEAD LOCATOR

- Allows locating in all pipes including cast iron
- Detects 512Hz signal from sondes and S1E cameras
- Works with 640Hz, 8kHz and 33kHz frequencies
- Backlit digital display for low-light reading
- Intuitive operation with audio signal
- Includes padded case and batteries



S1E Camera Locator & Detection Systems

Part Number	Description
S1E-MT512+	Digital Depth - Camera Head Locator
S1E-RL8800	Complete Pipe Locator Package

Spot Repairs & Manhole Rehabilitation

Epoxy & Grout Guns

QUAD-ONEGUN QUAD-ONEGUN-M (Mini)

Dual Component delivery systems. The **Mini** is designed for up to 300ml cartridges while the **ONEGUN** handles 1200ml cartridges and all epoxy mastics in cartridges. 1 to 1 or 2 to 1 ratios.



Part Number	Description
QUAD-ONEGUN	1200ml Epoxy Delivery Gun
QUAD-ONEGUN-M	MINI - 300ml Epoxy Delivery Gun

QUAD-M-ONEGUN900 I&I Guard Dual Component Caulk Gun for 600ml x 300ml 26:1 Thrust Ratio



Part Number	Description
QUAD-M-ONEGUN900	Caulk Gun for 450ml x 450ml / 450ml x 225ml

QUAD-M-ONEGUN600 I&I Guard Dual Component Caulk Gun for 300ml x 300ml 26:1 Thrust Ratio



Part Number	Description
QUAD-M-ONEGUN600	Caulk Gun for 300ml x 300ml / 300ml x 150ml

QUAD-M-ONEGUN1200 I&I Guard Dual Component Caulk Gun for 600ml x 600ml 26:1 Thrust Ratio



Part Number	Description
QUAD-M-ONEGUN1200	Caulk Gun for 600ml x 600ml / 600ml x 225ml

Fiberglass Wrap

Pow-R Wrap

Pow-R Wrap is a water activated fiberglass wrap that permanently repairs wet or dry pipe and hose.

Complies with NSF/ANSI 372 (Powerstick)



Part Number	Description
FPW248CS	2" x 48" wrap, repairs up to 1" pipe
FPW3132CS	3" x 132" wrap, repairs 1 1/4" to 3" pipe
FPW4252CS	4" x 252" wrap, repairs 3" to 6" pipe

Pow-R Patch - Epoxy Patch

Part Number	Description
FP-P46	4" x 6" patch

Pow-R Wrap Industrial - Large Dia. Wrap

Part Number	Description				
FPW8540S-1	8" x 540" wrap, repairs up to 50" pipe				
PIPE OUTSIDE DIAMETER	8" - 18"	20" - 24"	26" - 34"	36" - 42"	44" - 50"
Number of Kits REQUIRED for Pipe Size	1 KIT	2 KITS	3 KITS	4 KITS	5 KITS



Manhole Repair Solutions



STABILIZE SOIL & CREATE A WATER TIGHT BARRIER

I&I Guard[®]-MSF (Soil Stabilization Foam) is designed to both remediate infiltration and stabilize soil by migrating beyond the structure into the loose soil and into below-grade voids. As the material begins to react it expands to form a rigid foam, forming a water tight barrier.



EXTREME CORROSION PROTECTION & FULL STRUCTURAL LINING

Structure Guard[®] is a 100% solids epoxy lining system. Extremely corrosion resistant and contains no VOCs, it is typically used for protective lining or as a top coat in structural lining composite systems that employ Qualex Repair Materials such as QM-1s Restore[®].



CURTAIN GROUT AND SOIL STABILIZATION

Injected at the leak source, **I&I Guard[®]-SSF** polyurethane foam grouts are designed with a wide range of densities to fill deep voids and address I&I threatening eminent sinkhole conditions.



MANHOLE MAJOR DEFECTS

When age and deterioration leads to cracks, defects, deterioration and leaks, **Hyperform[®]** is a single component, rapid-setting, high early strength patching mortar.



LEAKING INVERTS & LATERALS

I&I Guard[®]-PRF is a dual component hydrophobic polyurethane grout, with a 1-3 second reaction time. Perfect for running or gushing leaks, up to 50 GPM (189 LPM).

CHIMNEY/ CONE SEALING



Freeze/thaw conditions ultimately lead to expansion and contraction, a common cause of infiltration in manhole chimneys. **Chimney Guard[™]** is a hybrid epoxy urea coating. It is ready to use, does not require a primer and offers 270% elongation to prevent this very common situation.

PERSISTENT WATER SEEPAGE



I&I Guard[®]-SCF is a deep penetrating, single component, closed cell, pre-catalyzed, hydrophobic grout. Works best where leaks are slow, allowing the foam to reach and set deeper behind the crack.

LOW FLOW LEAKS



Quad-Plug[®] is a blend of hybrid cements and admixtures developed to instantly stop water seepage, up to 5 GPM (19 LPM), in concrete and masonry structures.

FULL STRUCTURAL RENEWAL & CORROSION PROTECTION



QM-1s Restore[®] can be used as a stand alone structural, mild corrosion resistant lining or as underlayment in both semi and fully structural composite systems when restoring the entire manhole structure.

DETERIORATED BENCHES



Hyperform[®]-RS is a rapid setting patching material designed for concrete and masonry structures. It can be easily shaped and sets up in 3-5 minutes.



REPAIR MATERIALS

All Quadex products are produced with the environment in mind, and developed in strict accordance to ASTM and similarly substantiated industry standards. When combined with the Quadex sprayMASTER™ II coatings system, the result is a precision applied coating that delivers high performance and decades of uninterrupted service.



STRUCTURE GUARD®-FM

Micro-Fiber Reinforced Mastic

Structure Guard®-FM is a 100% solids epoxy mastic used to protect new infrastructure and to rehabilitate existing, damaged, infrastructure.

Application Method: Trowel applied

Recommended For

- Manholes, wet wells, vaults and septic tanks
- Steel substrates
- Floor and wall penetrations/ cracks
- Simple spot repair
- Extreme bonding to nearly all substrates
- Fast curing
- Easy workability
- ¼" build capability with no sag
- No mixing means faster application

Features and Benefits

- 100% solids epoxy
- No harmful VOCs
- Convenient and easy to use



STRUCTURE GUARD®-RS

Corrosion Resistant Epoxy Protective Coating

Structure Guard®-RS is a 100% solid, high-build epoxy coating formulated to provide long-term corrosion protection and structural enhancement for manholes, pump stations, treatment plants or any wastewater infrastructure subject to high levels of corrosion and/or abrasion. Structure Guard-RS sets fast for a quick return-to-service in the most aggressive and turbulent environments. It finishes smooth to enhance flow and is utilized as an interior or exterior pipe lining. It is also ideal for invert repairs.

Application Method:
Trowel applied

Recommended For

- Inverts
- Manhole bottoms
- Benches

Features and Benefits

- 100% Solids, No VOCs
- Fast set time
- Excellent corrosion and abrasion resistance



FLEX GUARD™-FM

Flexible Epoxy Mastic

Flex Guard™-FM is a flexible fiber reinforced epoxy mastic for application on metal and concrete substrates, cracks or joints that experience movement. With a 100-150% elongation it is ideal for freeze/thaw and structures that experience temperature fluctuations.

Application Method: Trowel applied

Recommended for Joints / Gaps / Cracks / Holes

Features and Benefits

- Fiber reinforced
- Flexible, 100-150% elongation
- Quick cure time



CHIMNEY GUARD™

Flexible Manhole Chimney Coating

Chimney Guard™ is a one step, durable chimney seal made from a 100% solids Epoxy/Urethane hybrid. It is designed to provide a highly flexible and securely bonded seal prepared to address heavy traffic loading, extreme freeze/thaw and infiltration.

Application Method: Trowel applied

Recommended for flexible coating on surfaces that experience extreme freeze/thaw or heavy traffic loading.

Features and Benefits

- High build monolithic coating / 100 mils per coat
- Superior adhesion to steel, concrete and brick
- Permanent flexibility at low temperature



Corrosion Resistance
High



QUAD-PLUG™

Cures in 30-60 seconds.

Quad-Plug™ is a blend of hybrid cements and admixtures designed to instantly stop running water or seepage in all types of concrete and masonry structures.

Features & Benefits

- Stops running water immediately
- Non-shrink, expands as it sets
- Contains no calcium chloride
- Non-metallic and Sulfate resistant

Recommended For: Sewer pipes and manholes, concrete tanks, elevator pits, cisterns, basements, concrete and masonry walls.

PACKAGING:

Quad-Plug is supplied in a 50 lb. (22.6 kg.) plastic pail
SOLD IN PALLET QTY'S ONLY - 36/Pallet



HYPERFORM™-RS HYPERFORM™

Hyperform™-RS (Blue Lid Pail) is a rapid-setting cement (3-5 minutes).

Recommended For: Repairing vertical and horizontal concrete and masonry structures. **Cures in 3-5 minutes.**

Features & Benefits

- Rapid-setting
- High early and ultimate strengths
- Non-shrinking
- No calcium chloride
- Excellent resistance to freeze/thaw

Recommended For:

Filling large voids in manhole walls, reconstructing inverts, catch basins and pipe repair.

Hyperform™ (Poly-Lined Bag) is a one component, rapid-setting, high early strength patching material designed for repairing vertical and horizontal concrete and masonry structures. With invert lining, flow can be released with 25-30 minutes post mixing. **Cures in 30 minutes.**

PACKAGING:

Hyperform is supplied in 60 lb. | 27.2 kg. poly-lined bags or 50 lb. | 22.6 kg. plastic pails. SOLD IN PALLET QTY'S ONLY. 36 Pails /Pallet -- 56 Bags/Pallet.



QM-1s RESTORE™

**Cures in 20-30 minutes.
Can be Coated within 24-hours.**

QM-1s Restore™ is a Portland cement based, single component, high strength, fiber reinforced, shrinkage compensated cement mortar enhanced with a monocryalline quartz aggregate. QM-1s Restore was designed to structurally repair deteriorated metal, concrete and masonry structures.

PACKAGING: QM-1s Restore is supplied in 60 lb. (27.2 kg.) poly-lined bags



I&I GUARD™

Quadex I&I Guard is a group of grouting products designed to stop water infiltration. With varying reaction times, these products are designed to address issues from ground stabilization, weeping water leaks caused by channels formed over time, and active water flow.

I&I Guard®-PRF is a two-part polyurethane grout used to stop high flow infiltration.

PACKAGING:

12-pack of 300ml x 300ml Cartridges and 6-pack of 600ml x 600ml Cartridges



I&I Guard®-SCF is a single component hydrophobic polyurethane grout designed to stop water infiltration while at the same time filling voids, cracks and joints.



I&I Guard®-SCF 200 is a single component, moisture-activated and MDI/TDI blended polyurethane injection grout designed for sealing persistent water leaks from large cracks or leaking joints in concrete structures.

PACKAGING: 600x600ml cartridges, 1200x1200ml cartridges, and 5-gallon pail

I&I Guard®-MSF (Soil Stabilization Foam) is a low viscosity, polyurethane injection resin, designed to stabilize soil.

PACKAGING: Kit consisting of 5-gal pail (Resin) and 1-qt (Activator)



QUADEX REPAIR MATERIALS

Part Number	Description
QUAD-SG-FM1.5	Structure Guard - 1.5 Gallon Kit Epoxy
QUAD-SG-FM6/3	Structure Guard - 600x300ml Epoxy
QUAD-SG-RS6/3	Structure Guard - Rapid Setting Epoxy 600x300ml
QUAD-SG-QS	Structure Guard - Quick Spray 4-gal Kit
QUAD-SG-WATER	Structure Guard - (6) 600x300ml Epoxy
QUAD-FG-FM600	Flex Guard - Flexible Epoxy (6) 600ml Cartridges
QUAD-CG-KIT	Chimney Guard - Epoxy/Urethane 2-Part Kit
QUAD-QM-1S	Qm-1S Restore - Compare to Portland Cement #60 Bag
QUAD-HF-50	Hyperform - Fast Curing Cement - #50 Pail
QUAD-HF-60	Hyperform - Fast Curing Cement - #60 Bag
QUAD-HF-RS	Hyperform RS - Rapid Setting - #50 Pail
QUAD-PLUG	Quad Plug - Hybrid fast acting Cement / #50 Pail
QUAD-I&I-SCF5	I&I - Single Component Grout 5 gallon Pail
QUAD-I&I-SCF600	I&I - Single Component Grout 600ml Cartridges
QUAD-I&I-SCF1200	I&I - Single Component Grout 1200ml Cartridges
QUAD-I&I-SCF200-GEL600	I&I - Single Component Gel - 600ml Cartridges
QUAD-I&I-SCF200-GEL1200	I&I - Single Component Gel - 1200ml Cartridges
QUAD-I&I-SCF200-GEL5GAL	I&I - Single Component Gel - 5 gallon Pail
QUAD-I&I-PRF-600	I&I - Fast Curing Grout (12) 600ml Cartridges
QUAD-I&I-PRF-1200	I&I - Fast Curing Grout (6) 1200ml Cartridges
QUAD-I&I-MSF5	I&I - Migration Foam Grout / 5 gallon Pail



White Paper Results Exceed ASTM F 1216/ASTM F 3541

Today's most innovative systems for lateral and mainline pipe rehabilitation is CIPP (Cured-in-Place Pipe Lining). Plumbers, Contractors, Municipalities and others have embraced this "trenchless pipe repair" technology. No-Digging of yards or sidewalks, and reducing road closures and traffic backups during repairs is now a cost-saving consideration.

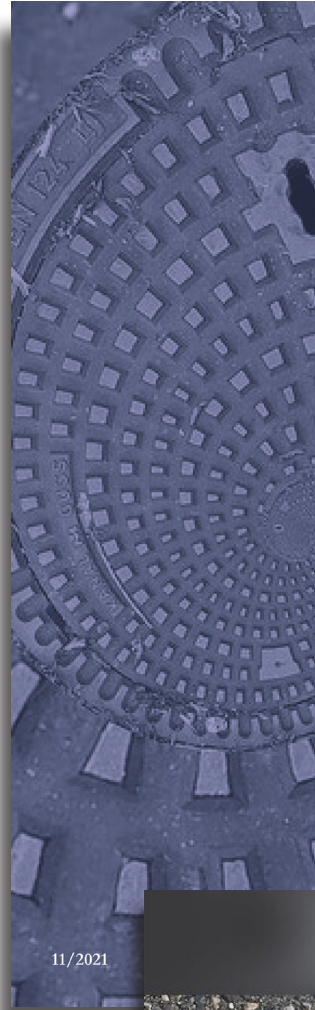
Quality assurance and quality control testing of CIPP installations is required to confirm that the materials used comply with the site and engineering requirements. Since ground and ambient installation conditions as well as crew skills can affect the success or failure of a cure cycle, ASTM F 1216/ASTM F 3541 testing is performed by independent laboratories in normal cases.

ASTM F 1216/ASTM F 3541

S1E submitted a test sample to an independent third-party laboratory to perform a CIPP Sectional Repair in a piece of 4-inch SDR 35 pipe.

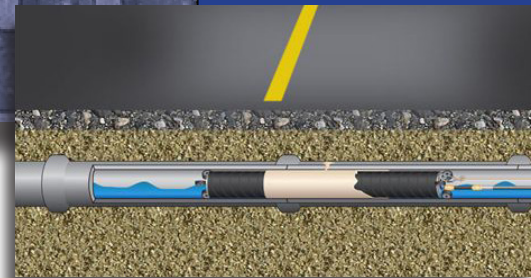
The testing data disclosed the average flexural strength and the average flexural modulus. The findings also revealed if the CIPP sectional repair method meets, exceeds, or fails to comply with ASTM F 1216/ASTM F 3541 standards.

The ASTM F 1216/ASTM F 3541 standard titled, "Standard Practice for Rehabilitation of Existing Pipelines and Conduits by the Inversion and Curing of a Resin-Impregnated Tube," requires that an installed patch once fully cured meet or exceed a minimum Flexural Strength and Flexural Modulus. It further specifies the test method, ASTM D 790, to be used to determine the given Flexural Strength and Flexural Modulus.



CIPP Sectional Repair

*Fiberglass Mat and
Silicate Resin
In Comparison to
Polyester Inversion Liner
and Silicate Resin*



Testing of the S1E PipePatch Kit revealed the patch not only met the required minimums, but far exceeded the Strength and Modulus compliance standard (see below).

Flexural Strength (Min.) **4,500 psi.**
S1E Flexural Strength **25,245 psi.**
Exceeds the minimum requirements

Flexural Modulus (Min.) **250,000 psi.**
S1E Flexural Modulus **841,138 psi.**
Exceeds the minimum requirements



www.s1eonline.com

UNITED STATES
300 S. Dayton Street
Davison, Michigan 48423
(877) 450-3701

CANADA
850 Phillips St. E.
Sarnia, Ontario N7T 1Z6
(519) 332-6711



(877) 450-3701



www.s1eonline.com