

**PIPE TREKKER**

# A-150 Pipe Crawler

Rugged. Reliable. Remote.



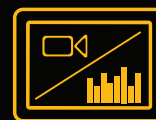
## The Next Generation of Small Diameter Crawlers



Centers in  
6"-24" Pipes



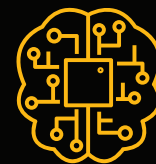
Up to 8 Hours  
Battery Life



Included Software  
& PACP Integratable



1080 Full HD  
Pan/Tilt Camera



Artificial Intelligence  
Compatible



Map and Model  
Generation





## All crawler packages include



Crawler Body



Full HD  
Pan/Tilt Camera



Motorized  
Lift Arm



Rubber Wheel  
Set



512 mHz  
Sonde



Floodlights  
& Laser Scaler



2 Rugged Cases



### A-150S

### A-150X

### A-200S

### A-200X

Centers In	6" - 24"	6" - 24"	8" - 38"	8" - 38"
1080 Full HD Pan/Tilt Camera	✓	✓	✓	✓
Zoom			✓	✓
Rear Camera				✓
Touchscreen Rugged Tablet		✓		✓
Tunnel Software Access		✓		✓
Robotic Elevating Arm	✓	✓	✓	✓
512 mHz Sonde	✓	✓	✓	✓
Tether Length	<b>200M</b> Manual Reel	<b>200M</b> Automatic Reel	<b>200M</b> Manual Reel	<b>310M</b> Automatic Reel
Tether Reel	✓	✓	✓	✓
Rubber Wheel Kits	✓	✓	✓	✓
Carbide Wheel Kits		✓		✓
Wheel Spacers				✓
Direct Power & Battery Operation		✓		✓

### Head office

155 Washburn Dr  
Kitchener, ON  
Canada

A150\_ENG\_0223\_01

### Chile Office

Ruta 5 Sur KM 1025 Bodega 5  
(Megacentro1)  
Puerto Montt, Los Lagos, Chile

Scan to visit  
our website



# PIPE TREKKER

[pipetrekker.com](http://pipetrekker.com)  
[sales@pipetrekker.com](mailto:sales@pipetrekker.com)